

Catholic Cemeteries

Diocese of Rockville Centre
P. O. Box 182 - Westbury NY 11590-0182
516-334-7990 • www.holyroodcemetery.org

Holy Sepulchre Cemetery
3442 Route 112 Coram NY 11727
631-732-3460
www.holysepulchrecemetery.org

Queen of All Saints Cemetery
115 Wheeler Rd Central Islip NY 11722
631-234-8297
www.queenofallsaintscemetery.org

EFFECTIVE SEPTEMBER 1, 2011

PLOT PRICES

Single Grave-Flush Marker Section	\$ 2,400.00
Single Grave – Shrine Section	\$ 2,650.00
Single Grave	\$ 2,400.00
Double Grave	\$ 4,800.00
Triple Grave	\$ 7,400.00
Four Grave	\$ 9,800.00
Five Grave	\$ 12,300.00
Six Grave	\$ 14,750.00
Eight Grave	\$ 19,650.00
Twelve Grave	\$ 29,400.00

Children's Section

Grave	\$ 290.00
Interment *(Saturday \$415.00)	* \$ 230.00
Marker	\$ 640.00
Setting Fee	\$ 100.00

Mausoleum Sites – Holy Sepulchre Cemetery

Single	\$ 43,200.00
Double	\$ 86,400.00

Prices are subject to change without notice. Make checks payable to **CATHOLIC CEMETERIES**.

Master Card, Visa, Discover and Bank Debit Cards accepted for all in-office transactions.

*Everyone is encouraged to review the cemetery rules and regulations concerning plants and decorations before purchase.
Inscriptions are regulated in format and limited in length. Entombment, interment, and inscription fees are published separately.*

Visiting Hours 8:00 AM – 5:00 PM

Office Hours 9:00 AM – 4:30 PM

Buildings & Chapel Hours 8:00 AM – 4:30 PM

Catholic Cemeteries
 Diocese of Rockville Centre
 P. O. Box 182 - Westbury NY 11590-0182
 516-334-7990 • www.holyroodcemetery.org

Holy Sepulchre Cemetery
 3442 Route 112, Coram NY 11727
 631-732-3460
 www.holysepulchrecemetery.org

Queen of All Saints Cemetery
 115 Wheeler Rd, Central Islip NY 11722
 631-234-8297
 www.queenofallsaintscemetery.org

EFFECTIVE SEPTEMBER 1, 2011

Headstone Section

Bronze Marker Section

(Vase & Granite Base are included with Marker)

Flush Marker Section:

Shrine Section:

Single Grave (for the interment of 2 or 3)	\$ 2,400.	\$ 2,400.	\$ 2,650.
Foundation	<u>\$ 550.</u>	\$ 550.	\$ 550.
		Marker \$ 1,870.	\$ 1,870.
		<u>Setting \$ 100.*</u>	<u>\$ 100.*</u>
Total	\$ 2,950.	\$ 4,920.	\$ 5,170.
Deposit	<u>\$ 310.</u>	<u>\$ 504.</u>	<u>\$ 514.</u>
Amount Financed	\$ 2,640.	\$ 4,416.	\$ 4,656.
Option # 1 - If the contract is paid in full in 24 months, there is no interest or finance charges.			
24 Monthly Payments (interest free)	\$ 110.	\$ 184.	\$ 194.

Headstone Section

Double Grave (for the interment of 4 or 6)	\$ 4,800.
Foundation	<u>\$ 840.</u>
Total	\$ 5,640.
Deposit	<u>\$ 576.</u>
Amount Financed	\$ 5,064.
Option # 1 - If the contract is paid in full in 24 months, there is no interest or finance charges.	
24 Monthly Payments (interest free)	\$ 211.

- Payment terms do not apply for sales as immediate use. Spaces under payment plan must be paid in full before entombment, burial or inurnment.
- These terms are only if the payments are kept current. There is a late charge on payments and an interest charge of 9% if payments go over 2 years.
- Prices do not include the "interment charge" at the time of a burial.
- All plots include Permanent Maintenance.
- At the time of setting the marker there is currently a \$100.00 setting fee.

Prices are subject to change without notice. Make checks payable to CATHOLIC CEMETERIES.
 Master Card, Visa, Discover and Bank Debit Cards accepted for all in-office transactions.

*Everyone is encouraged to review the cemetery rules and regulations concerning plants and decorations before purchase.
 Note: Verify crypt/niche dimensions prior to purchase of casket/urn. Inscriptions are regulated in format and limited in length.
 Entombment, inurnment, and inscription fees are published separately. There is no additional charge for maintenance.*

Visiting Hours 8:00 AM – 5:00 PM

Office Hours 9:00 AM – 4:30 PM

Buildings and Chapel Hours 8:00 AM – 4:30 PM

Catholic Cemeteries

Diocese of Rockville Centre
P. O. Box 182 - Westbury NY 11590-0182
516-334-7990 • www.holyroodcemetery.org

Holy Sepulchre Cemetery
3442 Route 112 Coram NY 11727
631-732-3460
www.holysepulchrecemetery.org

Queen of All Saints Cemetery
115 Wheeler Rd Central Islip NY 11722
631-234-8297
www.queenofallsaintscemetery.org

EFFECTIVE SEPTEMBER 1, 2011

LAWN CRYPT SECTION – DOUBLE DEPTH (FOR 2 CASKETS)

FLUSH MARKER AREA – BRONZE MARKER INCLUDED

AREA	A	B	C
Burial Right	\$ 3,020.00	\$ 2,875.00	\$ 3,280.00
Permanent Maintenance	\$ 1,010.00	\$ 950.00	\$ 1,095.00
Total Plot	\$ 4,030.00	\$ 3,825.00	\$ 4,375.00
Marker*, Vase, Granite Base, Setting Fee	\$ 1,970.00	\$ 1,970.00	\$ 1,970.00
TOTAL	\$ 6,000.00	\$ 5,795.00	\$ 6,345.00
*Epitaph: NO CHARGE for 4 Words (when placed on memorial background at time of manufacture)			
*Each additional word \$ 20.			

MONUMENT AREA – MONUMENT PERMITTED – NOT INCLUDED

AREA	A	B	C
Burial Right	\$ 3,335.00	\$ 3,170.00	\$ 3,590.00
Permanent Maintenance	\$ 1,110.00	\$ 1,055.00	\$ 1,195.00
Total Plot	\$ 4,445.00	\$ 4,225.00	\$ 4,785.00
Foundation	\$ 550.00	\$ 550.00	\$ 550.00
TOTAL	\$ 4,995.00	\$ 4,775.00	\$ 5,335.00

Prices do NOT include: the interment fee that is charged at the time of burial, the marker setting fee or marker and granite shipping costs at the time of setting for markers that are manufactured and stored.

<u>Area Key</u>
A = Veterans Section
B = Perimeter
C = Interior
B & C – Holy Family Section at Queen of All Saints Cemetery
A, B, & C – Veterans, Saint Matthew, St. Mark Sections at Holy Sepulchre Cemetery



Prices are subject to change without notice. Make checks payable to CATHOLIC CEMETERIES.
Master Card, Visa, Discover and Bank Debit Cards accepted for all in-office transactions.

*Everyone is encouraged to review the cemetery rules and regulations concerning plants and decorations before purchase.
Note: Verify crypt/niche dimensions prior to purchase of casket/urn. Inscriptions are regulated in format and limited in length.
Entombment, inurnment, and inscription fees are published separately. There is no additional charge for maintenance.*

Catholic Cemeteries

Diocese of Rockville Centre

P. O. Box 182 - Westbury NY 11590-0182

516-334-7990 • www.holyroodcemetery.org

Holy Sepulchre Cemetery

3442 Route 112, Coram NY 11727

631-732-3460

www.holysepulchrecemetery.org

Queen of All Saints Cemetery

115 Wheeler Rd., Central Islip NY 11722

631-234-8297

www.queenofallsaintscemetery.org

ST. FRANCIS DE SALES PARISH CEMETERY

7 Amity Street – P.O. Box 71, Patchogue NY 11772

631-475-0161

Cemetery Interment Fees

Effective September 1, 2011

INTERMENT FEES	Monday to Friday	Saturday
Adults	\$ 1,310.00	\$ 1,630.00
Children – Box Over 4'6"	\$ 1,310.00	\$ 1,630.00
Children – Box 3'1" up to 4'6"	\$ 795.00	\$ 1,120.00
Children – Box up to 3'	\$ 230.00	\$ 415.00
Entombment – Private Mausoleum	\$ 1,195.00	\$ 1,595.00
Entombment – Chapel & Garden Mausoleum	\$ 1,195.00	\$ 1,595.00
Mausoleum Inscription Fee	\$ 440.00	\$ 440.00

DISINTERMENT FEES	Monday to Friday	Saturday
Adults	\$ 1,925.00	not scheduled
Children – Box Over 4'6"	\$ 1,925.00	not scheduled
Children – Box 3'1" up to 4'6"	\$ 1,235.00	not scheduled
Children – Box up to 3'	\$ 960.00	not scheduled

CREMATED REMAINS	Monday to Friday	Saturday
In a Plot	\$ 580.00	\$ 720.00
In a Niche / Crypt	\$ 485.00	\$ 590.00

ACCESSORIES	Monday to Friday	Saturday
Tent with Chairs	\$ 215.00	\$ 215.00

OVERTIME CHARGES	Monday to Friday After 2:30 PM	Saturday After 12:00 noon
Charge per half hour	\$ 270.00	\$ 270.00

Cancellation of a committal service order shall be subject to a charge of 50% of the stated fee.

Prices are subject to change without notice. Make checks payable to **CATHOLIC CEMETERIES**.

Master Card, Visa, Discover and Bank Debit Cards accepted for all in-office transactions.

All committal services are subject to the specification of the General Rules and Regulations of Catholic Cemeteries.

For details on the rights of interment, criteria/eligibility for burial in a Catholic Cemetery, and our administrative procedures and protocols, please review the rules at www.holyroodcemetery.org

Everyone is encouraged to review the cemetery rules and regulations concerning plants and decorations before purchase.

Note: Verify crypt/niche dimensions prior to purchase of casket/urn. Inscriptions are regulated in format and limited in length.

Entombment, inurnment, and inscription fees are published separately. There is no additional charge for maintenance.

Visiting Hours 8:00 AM – 5:00 PM

Office Hours 9:00 AM – 4:30 PM

Buildings & Chapel Hours 8:00 AM – 4:30 PM

CATHOLIC CEMETERIES

Diocese of Rockville Centre
P. O. Box 182 - Westbury NY 11590-0182
516-334-7990 • www.holyroodcemetery.org



OUR LADY OF THE ROSARY CHAPEL MAUSOLEUM HOLY SEPULCHRE CEMETERY

3442 Route 112, Coram NY 11727 • (631) 732-3460 • www.holysepulchrecemetery.org

CRYPT (CASKET) SPACES

EFFECTIVE SEPTEMBER 1, 2011

Our Lady of the Rosary Chapel

<u>TRUE COMPANION</u> (2 casket spaces)	
<u>Tier/Level</u>	<u>Price</u>
F	\$13,600.
E	\$15,700.
D	\$18,475.
C	\$20,225.
B	\$22,250.
A	\$19,325.

St. Dominic Corridor

<u>SINGLE</u> (1 casket space)		<u>SIDE BY SIDE COMPANION</u> (2 casket spaces)		<u>TRUE COMPANION</u> (2 casket spaces)	
<u>Tier/Level</u>	<u>Price</u>	<u>Tier/Level</u>	<u>Price</u>	<u>Tier/Level</u>	<u>Price</u>
F	\$ 7,850.			F	\$12,000.
E	\$ 8,900.			E	\$15,000.
D	\$ 10,000.	D	\$ 20,000.	D	\$16,600.
C	\$11,000.	C	\$22,000.	C	\$18,150.
B	\$12,000.	B	\$24,000.	B	\$20,000.
A	\$11,000.			A	\$17,375.

Our Lady of the Rosary Garden

<u>SINGLE</u> (1 casket space)		<u>SIDE BY SIDE COMPANION</u> (2 casket spaces)		<u>TRUE COMPANION</u> (2 casket spaces)	
<u>Tier/Level</u>	<u>Price</u>	<u>Tier/Level</u>	<u>Price</u>	<u>Tier/Level</u>	<u>Price</u>
F	\$5,500.			F	\$ 8,975.
E	\$6,800.			E	\$11,500.
D	\$7,800.	D	\$16,000.	D	\$12,700.
C	\$8,600.	C	\$17,500.	C	\$13,850.
B	\$9,300.	B	\$19,500.	B	\$15,175.
A	\$8,300.			A	\$12,550.

Prices are subject to change without notice. Make checks payable to **CATHOLIC CEMETERIES**.

Master Card, Visa, Discover and Bank Debit Cards accepted for all in-office transactions.

Everyone is encouraged to review the cemetery rules and regulations concerning plants and decorations before purchase.

Note: Verify crypt/niche dimensions prior to purchase of casket/urn. Inscriptions are regulated in format and limited in length.

Entombment, inurnment, and inscription fees are published separately. There is no additional charge for maintenance.

CATHOLIC CEMETERIES

Diocese of Rockville Centre
P. O. Box 182 - Westbury NY 11590-0182
516-334-7990 • www.holyroodcemetery.org



OUR LADY OF THE ROSARY CHAPEL MAUSOLEUM HOLY SEPULCHRE CEMETERY

3442 Route 112, Coram NY 11727 • (631) 732-3460 • www.holysepulchrecemetery.org

COLUMBARIUM SPACES (CREMATION NICHE)

EFFECTIVE SEPTEMBER 1, 2011

<u>ST. DOMINIC CORRIDOR</u> (2 urn spaces)	
<u>Tier/Level</u>	<u>Price</u>
J	\$1,395.
I	\$1,395.
H	\$1,500.
G	\$1,600.
F	\$1,600.
E	\$1,600.
D	\$1,750.
C	\$1,750.
B	\$1,750.
A	\$1,600.

<u>OUR LADY OF THE ROSARY GARDEN</u> (2 urn spaces)	
<u>Tier/Level</u>	<u>Price</u>
J	\$1,300.
I	\$1,300.
H	\$1,375.
G	\$1,475.
F	\$1,475.
E	\$1,475.
D	\$1,600.
C	\$1,600.
B	\$1,600.
A	\$1,475.

Prices are subject to change without notice. Make checks payable to CATHOLIC CEMETERIES.
Master Card, Visa, Discover and Bank Debit Cards accepted for all in-office transactions.

*Everyone is encouraged to review the cemetery rules and regulations concerning plants and decorations before purchase.
Note: Verify crypt/niche dimensions prior to purchase of casket/urn. Inscriptions are regulated in format and limited in length.
Entombment, inurnment, and inscription fees are published separately. There is no additional charge for maintenance.*

Visiting Hours 8:00 AM – 5:00 PM

Office Hours 9:00 AM – 4:30 PM

Buildings and Chapel Hours 8:00 AM – 4:30 PM

CATHOLIC CEMETERIES

Diocese of Rockville Centre
P. O. Box 182 - Westbury NY 11590-0182
516-334-7990 • www.holyroodcemetery.org



HOLY CROSS CHAPEL & GARDEN MAUSOLEUM

HOLY SEPULCHRE CEMETERY

3442 Route 112, Coram NY 11727 • (631) 732-3460
www.holysepulchrecemetery.org

PRICES EFFECTIVE --- SEPTEMBER 1, 2011

CRYPT (CASSET) SPACES

ST FRANCIS OF ASSISI CORRIDOR

TRUE COMPANIONS

(2 casket spaces)

Tier/Level	Price
F	\$ 8,610
E	\$10,165

HOLY FAMILY CORRIDOR

TRUE COMPANIONS

(2 casket spaces)

Tier/Level	Price
F	\$ 8,610
E	\$10,165

SACRED HEART CHAPEL

COLUMBARIUM (CREMATION NICHE) SPACES

MOSAIC NICHE FRONTS
(2 urn spaces)

Tier/Level	Price
H	\$1,500

HOLY CROSS GARDEN COLUMBARIUM (HC3)

CREMATION NICHE PRICES

GRANITE NICHE FRONTS (2 urn spaces)

Tier/Level	Price
H	\$1,275
G	\$1,275
F	\$1,375
E	\$1,375
D	\$1,375
C	\$1,500
B	\$1,500
A	\$1,500

Prices are subject to change without notice. Make checks payable to **CATHOLIC CEMETERIES**.
Master Card, Visa, Discover and Bank Debit Cards accepted for all in-office transactions.

*Everyone is encouraged to review the cemetery rules and regulations concerning plants and decorations before purchase.
Note: Verify crypt/niche dimensions prior to purchase of casket/urn. Inscriptions are regulated in format and limited in length.
Entombment, inurnment, and inscription fees are published separately. There is no additional charge for maintenance.*

CATHOLIC CEMETERIES

Diocese of Rockville Centre
P. O. Box 182 - Westbury NY 11590-0182
516-334-7990 • www.holyroodcemetery.org



Queen of All Saints Cemetery
115 Wheeler Rd., Central Islip NY 11722
631-234-8297

PRICES EFFECTIVE --- SEPTEMBER 1, 2011

<u>GARDEN & COURTYARD</u>		<u>GRANITE</u>	<u>GRANITE</u>	<u>GRANITE</u>	<u>GRANITE</u>
<u>GCM & AGM</u>	<u>Tier/Level</u>	<u>Single</u> <i>(1 casket space)</i>	<u>True Companion</u> <i>(2 casket spaces)</i>	<u>Side by Side Companion</u> <i>(2 casket spaces)</i>	<u>Front & Rear Couches</u> <i>(2 casket spaces)</i>
<i>Queen of All Saints Chapel & Garden Mausoleum</i> & <i>Annunciation Garden Mausoleum</i>	F	\$ 4,200	\$ 5,850	\$ 8,295	\$ 9,250
	E	\$ 5,085		\$ 9,475	\$10,860
	D	\$ 5,430		\$10,285	\$12,130
	C			\$11,090	\$12,705
	B	\$ 6,470	\$ 9,590	\$12,015	\$13,750
	A	\$ 5,545	\$ 8,665	\$10,510	\$15,235
	A2				
	A3	-----	\$11,550	-----	
	A4	-----	\$13,170	-----	

<u>CORRIDORS</u>		<u>GRANITE</u>	<u>GRANITE</u>	<u>GRANITE</u>	<u>MOSAIC</u>
<u>AGM</u>	<u>Tier/Level</u>	<u>Single</u> <i>(1 casket space)</i>	<u>True Companion</u> <i>(2 casket spaces)</i>	<u>Side by Side Companion</u> <i>(2 casket spaces)</i>	<u>Side by Side Companion</u> <i>(2 casket spaces)</i>
<i>Annunciation Garden Mausoleum</i> <i>Saint Anne & Saint Joseph</i>	F	\$ 5,150	\$ 8,400	-----	-----
	E	\$ 6,005	\$10,165	\$11,900	\$13,060
	D		\$10,975	\$12,820	\$14,215
	C		\$11,900		
	B		\$12,935	\$15,245	\$16,525
	A		\$11,550	\$12,935	-----
	A2		-----	-----	-----

Prices are subject to change without notice. Make checks payable to CATHOLIC CEMETERIES.
Master Card, Visa, Discover and Bank Debit Cards accepted for all in-office transactions.

*Everyone is encouraged to review the cemetery rules and regulations concerning plants and decorations before purchase.
Note: Verify crypt/niche dimensions prior to purchase of casket/urn. Inscriptions are regulated in format and limited in length.
Entombment, inurement, and inscription fees are published separately. There is no additional charge for maintenance.*

CATHOLIC CEMETERIES

Diocese of Rockville Centre
P. O. Box 182 - Westbury NY 11590-0182
516-334-7990 • www.holyroodcemetery.org



Queen of All Saints Cemetery
115 Wheeler Rd., Central Islip NY 11722
631-234-8297

PRICES EFFECTIVE --- SEPTEMBER 1, 2011

<u>CHAPEL</u> <u>GCM</u>	<u>Tier/Level</u>	<u>GRANITE/ MARBLE</u> <u>Single</u> <i>(1 casket space)</i>	<u>FEATURE WALL</u> <u>Single</u> <i>(1 casket space)</i>	<u>GRANITE/ MARBLE</u> <u>True Companion</u> <i>(2 casket spaces)</i>	<u>GRANITE/ MARBLE</u> <u>Modified True Companion</u> <i>(2 casket spaces)</i>
<i>Queen of All Saints Chapel & Garden Mausoleum</i>	F	\$5,460	\$ 4,200	\$ 8,925	\$10,600
	E	\$6,470	\$ 5,775		
	D	\$7,040	\$ 7,040	\$11,900	\$13,860
	C	\$7,625	\$ 8,200	\$12,940	\$15,130
	B	\$8,780	\$10,510	\$14,090	\$16,520
	A	\$8,200	\$ 9,355	\$12,705	\$17,560
	A2	\$10,745	\$11,550	-----	-----
	A4	-----	-----	\$17,325	\$20,215

<u>COLUMBARIUM</u> <u>GCM & AGM</u>	<u>Tier/Level</u>	<u>QAS Chapel</u> <u>Cremation Niche</u> <i>(2 urn spaces)</i>	<u>Annunciation Garden</u> <u>GRANITE</u> <u>Cremation Niche</u> <i>(2 urn spaces)</i>	<u>Annunciation Garden</u> <u>MOSAIC</u> <u>Cremation Niche</u> <i>(2 urn spaces)</i>
<i>Queen of All Saints Chapel & Garden Mausoleum</i> & <i>Annunciation Garden Mausoleum</i>	H		\$ 985	\$1,320
	G		\$ 985	\$1,320
	F		\$1,100	\$1,485
	E		\$1,100	\$1,485
	D		\$1,100	\$1,485
	C		\$1,245	\$1,650
	B		\$1,245	\$1,650
	A		\$1,245	\$1,650

Prices are subject to change without notice. Make checks payable to CATHOLIC CEMETERIES.
Master Card, Visa, Discover and Bank Debit Cards accepted for all in-office transactions.

*Everyone is encouraged to review the cemetery rules and regulations concerning plants and decorations before purchase.
Note: Verify crypt/niche dimensions prior to purchase of casket/urn. Inscriptions are regulated in format and limited in length.
Entombment, inurnment, and inscription fees are published separately. There is no additional charge for maintenance.*

Catholic Cemeteries

Diocese of Rockville Centre
 P. O. Box 182 - Westbury NY 11590-0182
 516-334-7990 • www.holyroodcemetery.org



CEMETERY OF THE HOLY ROOD

PO Box 182, 111 Old Country Road, Westbury NY 11590

HOLY ROOD CHAPEL MAUSOLEUM I & II

CRYPT (CASSET) SPACES

EFFECTIVE SEPTEMBER 1, 2011

<u>CORRIDORS</u>		<u>GRANITE</u>	<u>GRANITE</u>	<u>GRANITE</u>
<u>HRC – First Floor</u>	<u>Tier/Level</u>	<u>Single</u> (1 casket space)	<u>True Companion</u> (2 casket spaces)	<u>Side by Side Companion</u> (2 casket spaces)
Saint Jude	F	\$ 6,745.	\$12,050.	
Saint Paul	E	\$ 7,300.	\$12,935.	\$15,360.
Saint Peter	D	\$ 8,175.		
Saint Thomas	C	\$ 9,610.		
Good Shepherd	B	\$10,490.		
Resurrection	A	\$ 8,400.		

<u>CORRIDORS</u>		<u>GRANITE</u>	<u>GRANITE</u>	<u>GRANITE</u>
<u>HRC – Second Floor</u>	<u>Tier/Level</u>	<u>Single</u> (1 casket space)	<u>True Companion</u> (2 casket spaces)	<u>Side by Side Companion</u> (2 casket spaces)
Saint Andrew	G	\$5,860.	\$ 9,535.	
St. Bartholomew	F	\$6,300.	\$11,170.	\$12,960.
Saint James	E	\$6,745.	\$12,050.	\$14,095.
Saint Philip	D	\$7,405.		
Prince of Peace	C	\$8,840.		
Ascension	B	\$9,500.		
	A	\$7,735.		

Prices are subject to change without notice. Make checks payable to CATHOLIC CEMETERIES.
 Master Card, Visa, Discover and Bank Debit Cards accepted for all in-office transactions.

*Everyone is encouraged to review the cemetery rules and regulations concerning plants and decorations before purchase.
 Note: Verify crypt/niche dimensions prior to purchase of casket/urn. Inscriptions are regulated in format and limited in length.
 Entombment, inurnment, and inscription fees are published separately. There is no additional charge for maintenance.*

Catholic Cemeteries

Diocese of Rockville Centre
 P. O. Box 182 - Westbury NY 11590-0182
 516-334-7990 • www.holyroodcemetery.org



CEMETERY OF THE HOLY ROOD

PO Box 182, 111 Old Country Road, Westbury NY 11590

HOLY ROOD CHAPEL MAUSOLEUM I & II ASSUMPTION CHAPEL & GARDEN MAUSOLEUM

COLUMBARIUM (URN) SPACES

EFFECTIVE SEPTEMBER 1, 2011

<u>COLUMBARIUM</u>	<u>Tier/Level</u>	<u>Glass (Select)</u> <u>St. Peter</u> <u>St. Paul</u> (2 urn spaces)	<u>Glass (Classic)</u> <u>St. Peter</u> <u>St. Paul</u> (2 urn spaces)	<u>Granite Front</u> <u>1st Floor</u> <u>Resurrection</u> (2 urn spaces)	<u>Granite Front</u> <u>2nd Floor</u> <u>Ascension</u> <u>St. James</u> <u>St. Philip</u> (2 urn spaces)
HRC II <i>Holy Rood Chapel Mausoleum II</i>	H	\$1,650.		\$1,255	\$1,150
	G	\$1,650.	\$2,500	\$1,255	\$1,255
	F	\$1,650.	\$2,500	\$1,360	\$1,255
	E	\$1,980.	\$2,755	\$1,570	\$1,465
	D	\$1,980.	\$2,755	\$1,570	\$1,465
	C	\$1,980.	\$2,755	\$1,570	\$1,465
	B	\$1,980.	\$2,755	\$1,360	\$1,255
	A	\$1,760.		\$1,360	\$1,255

<u>COLUMBARIUM</u>	<u>Tier/Level</u>	<u>Granite / Marble* / Bronze</u> <u>Cremation Niche</u> (2 urn spaces)
ACM <i>Our Lady Queen of Peace Holy Family Courtyard Assumption Chapel</i>	L	\$1,210
	H	\$1,210
	G	\$1,320
	F	\$1,320
	E	\$1,540
HRC <i>* Holy Rood Chapel</i>	C	\$1,540
	B	\$1,320
	A	\$1,320

Prices are subject to change without notice. Make checks payable to CATHOLIC CEMETERIES.
 Master Card, Visa, Discover and Bank Debit Cards accepted for all in-office transactions.

*Everyone is encouraged to review the cemetery rules and regulations concerning plants and decorations before purchase.
 Note: Verify crypt/niche dimensions prior to purchase of casket/urn. Inscriptions are regulated in format and limited in length.
 Entombment, inurnment, and inscription fees are published separately. There is no additional charge for maintenance.*

Catholic Cemeteries

Diocese of Rockville Centre
 P. O. Box 182 - Westbury NY 11590-0182
 516-334-7990 • www.holyroodcemetery.org



HOLY ROOD CHAPEL MAUSOLEUM III CEMETERY OF THE HOLY ROOD

PO Box 182, 111 Old Country Road, Westbury NY 11590

EFFECTIVE SEPTEMBER 1, 2011

<u>CORRIDORS</u>	<u>Tier/Level</u>	(* GRANITE) MARBLE <u>Single</u> (1 casket space)	MARBLE <u>True Companion</u> (2 casket spaces)	MARBLE <u>Side by Side Companion</u> (2 casket spaces)
HRC III – First Floor				
<i>Saint Brigid</i>	F	\$ 8,660.	\$ 15,580.	
<i>Saint Rita</i>	E	\$ 9,340.	\$ 16,650.	\$ 19,590.
<i>Saint Clare</i>	D	\$ 10,390.	\$ 17,990.	\$ 21,580.
<i>Saint Joan of Arc *</i>	C	\$ 12,130.	\$ 21,320.	\$ 25,720.
<i>Saint Margaret</i>	B	\$ 13,150.	\$ 22,920.	\$ 27,840.
<i>Saint Mary</i>	A	\$ 10,660.	\$ 18,780.	
<i>Saint Lucy *</i>				
<i>Saint Martha</i>				

<u>CORRIDORS</u>	<u>Tier/Level</u>	(* GRANITE) MARBLE <u>Single</u> (1 casket space)	MARBLE <u>True Companion</u> (2 casket spaces)	MARBLE <u>Side by Side Companion</u> (2 casket spaces)
HRC III – Second Floor				
<i>Padre Pio</i>	F	\$ 8,120.	\$ 14,520.	
<i>St. Rocco</i>	E	\$ 8,660.	\$ 15,580.	\$ 18,050.
<i>St. Benedict</i>	D	\$ 9,450.	\$ 16,650.	\$ 19,920.
<i>St. John the Baptist</i>	C	\$ 11,200.	\$ 19,590.	\$ 23,520.
<i>St. William</i>	B	\$ 12,000.	\$ 21,050.	\$ 25,420.
<i>St. Michael</i>	A	\$ 9,850.	\$ 17,320.	
<i>St. Stephen *</i>				
<i>St. Charles *</i>				
Ven. Pierre Toussaint (Single Couch Crypts Only)		\$ 9,280.- \$ 14,250.		

Prices are subject to change without notice. Make checks payable to CATHOLIC CEMETERIES.

Master Card, Visa, Discover and Bank Debit Cards accepted for all in-office transactions.

Everyone is encouraged to review the cemetery rules and regulations concerning plants and decorations before purchase.

Note: Verify crypt/niche dimensions prior to purchase of casket/urn. Inscriptions are regulated in format and limited in length.

Entombment, inurement, and inscription fees are published separately. There is no additional charge for maintenance.

Catholic Cemeteries

Diocese of Rockville Centre
P. O. Box 182 - Westbury NY 11590-0182
516-334-7990 • www.holyroodcemetery.org



HOLY ROOD CHAPEL MAUSOLEUM III CEMETERY OF THE HOLY ROOD

PO Box 182, 111 Old Country Road, Westbury NY 11590

COLUMBARIUM (URN) SPACES

Prices Effective September 1, 2011

<u>COLUMBARIUM</u>	<u>Tier/Level</u>	<u>Marble (Select)</u> 1 st Floor	<u>Marble (Classic)</u> 1 st Floor	<u>Marble (Select)</u> 2 nd Floor	<u>Marble (Classic)</u> 2 nd Floor
		<i>(2 urn spaces)</i>	<i>(2 urn spaces)</i>	<i>(2 urn spaces)</i>	<i>(2 urn spaces)</i>
HRC III <i>Holy Rood Chapel Mausoleum III</i>	H	\$1,620.		\$1,500.	
	G	\$1,620.	\$2,380.	\$1,500.	\$2,190.
	F	\$1,750.	\$2,580.	\$1,620.	\$2,380.
	E	\$ 2,000.	\$2,950.	\$1,870.	\$2,760.
	D	\$2,000.	\$2,950.	\$1,870.	\$2,760.
	C	\$2,000.	\$2,950.	\$1,870.	\$2,760.
	B	\$1,750.	\$2,580.	\$1,620.	\$2,380.
	A	\$1,750.		\$1,620.	

FAMILY ROOMS

<u>First Floor</u>	<i>Our Lady of Lourdes</i>	12 entombment spaces	\$231,000.
	<i>Our Lady of Perpetual Help</i>	18 entombment spaces	\$309,000.
<u>Second Floor</u>	<i>Our Lady of Victory</i>	12 entombment spaces	\$231,000.
	<i>Our Lady of Grace</i>	18 entombment spaces	\$309,000.

- *Ask about our pre-need planning options.*
- *With a 10% down payment, interest free terms are available.*
- *Inquire at the cemetery office.*

Prices are subject to change without notice. Make checks payable to **CATHOLIC CEMETERIES**.

Master Card, Visa, Discover and Bank Debit Cards accepted for all in-office transactions.

*Everyone is encouraged to review the cemetery rules and regulations concerning plants and decorations before purchase.
Note: Verify crypt/niche dimensions prior to purchase of casket/urn. Inscriptions are regulated in format and limited in length.
Entombment, inurement, and inscription fees are published separately. There is no additional charge for maintenance.*



Catholic Cemeteries

Cemetery of the Holy Road P O Box 182 , Westbury NY 11590-0182
516.334.7990 www.holyroadcemetery.org
Diocese of Rockville Centre



Cemetery of the Holy Road * Queen of All Saints Cemetery * Holy Sepulchre Cemetery

Prices Effective September 1, 2011

Feet - Inches		1' 4 " or less	1' - 6"	1' - 8"	1' - 10"	2' - 0"	2' - 2 "	2' - 4 "	2' - 6 "
1.53	inches	16	18	20	22	24	26	28	30
2' - 0 " or less	24	\$588	\$661						
2' - 2 "	26	\$636	\$716						
2' - 4 "	28	\$685	\$771						
2' - 6 "	30	\$734	\$826						
2' - 8 "	32	\$783	\$881						
2' - 10 "	34	\$832	\$936						
3' - 0"	36	\$881	\$991	\$1,102					
3' - 2 "	38	\$930	\$1,047	\$1,163	\$1,279				
3' - 4 "	40	\$979	\$1,102	\$1,224	\$1,346	\$1,469			
3' - 6 "	42	\$1,028	\$1,157	\$1,285	\$1,414	\$1,542			
3' - 8 "	44	\$1,077	\$1,212	\$1,346	\$1,481	\$1,616			
3' - 10 "	46	\$1,126	\$1,267	\$1,408	\$1,548	\$1,689			
4' - 0"	48	\$1,175	\$1,322	\$1,469	\$1,616	\$1,763	\$1,909	\$2,056	\$2,203
4' - 2 "	50	\$1,224	\$1,377	\$1,530	\$1,683	\$1,836	\$1,989	\$2,142	\$2,295
4' - 4 "	52	\$1,273	\$1,432	\$1,591	\$1,750	\$1,909	\$2,069	\$2,228	\$2,387
4' - 6 "	54	\$1,322	\$1,487	\$1,652	\$1,818	\$1,983	\$2,148	\$2,313	\$2,479
4' - 8 "	56	\$1,371	\$1,542	\$1,714	\$1,885	\$2,056	\$2,228	\$2,399	\$2,570
4' - 10 "	58	\$1,420	\$1,597	\$1,775	\$1,952	\$2,130	\$2,307	\$2,485	\$2,662
5' - 0"	60	\$1,469	\$1,652	\$1,836	\$2,020	\$2,203	\$2,387	\$2,570	\$2,754

Above prices based on a price surface square foot of \$220

On Beam

SINGLE GRAVE(1'8" x 0'8") or (2'0" x 0'8") or (2'0" x 0'10")	\$550
DOUBLE GRAVE (2'6" x 0'8")	\$715
DOUBLE GRAVE (3'0" x 0'8") or (3'6" x 0'10")	\$840
MARKER SETTING FEE	\$100
INSCRIPTION FEE(PER APPLICATION)	\$75
AMENDED APPLICATION	\$25
MAUSOLEUM - VAULT FOUNDATIONS (PER CU. FT.)	\$20
SINGLE FOUNDATION ONDOUBLE PLOT OR LARGER	\$745
REMOVE EXISTING FOUNDATION	\$155

Prices Subject to Change without notice

Master Card, Visa, Bank Debit Cards for all in office transactions

Catholic Cemeteries

Diocese of Rockville Centre

P. O. Box 182 - Westbury NY 11590-0182

516-334-7990 • www.holyroodcemetery.org

Cemetery of the Holy Rood
111 Old Country Road
Westbury NY 11590
516-334-7990

Holy Sepulchre Cemetery
3442 Route 112
Coram NY 11727
631-732-3460

Queen of All Saints Cemetery
115 Wheeler Rd
Central Islip NY 11722
631-234-8297

ADDITIONAL SERVICES / PROGRAMS

EFFECTIVE SEPTEMBER 1, 2011

SEASONAL PROGRAMS		PRICE
Spring Floral Program – Easter	Palm Cross on Grave	\$ 25.00
	Lilly in Chapel	\$ 25.00
Spring Floral Program – Mother’s Day	Potted Plant on Grave	\$ 25.00
	Potted Plant in Chapel	\$ 25.00
Spring Floral Program – Father’s Day	Potted Plant on Grave	\$ 25.00
	Potted Plant in Chapel	\$ 25.00
Winter Decoration Program - Christmas <i>*(commences late November till late January)</i> <i>** (placed in advent - removed early January)</i>	* Evergreen - Blanket on Grave	\$ 55.00
	* Evergreen - Pillow on Grave	\$ 40.00
	**Poinsettia in Chapel	\$ 25.00
YEARLY PROGRAMS		
Crypt and Niche Floral Vase Program	Crypt Vase – Rental Fee	\$ 250.00
	Niche Vase – Rental Fee	\$ 110.00
One Year Enrollment	4 Seasons Crypt Flowers	\$ 100.00
	4 Seasons Niche Flowers	\$ 80.00
Two Year Enrollment	8 Seasons Crypt Flowers	\$ 200.00
	8 Seasons Niche Flowers	\$ 160.00
Lot Floral Vase –Bouquet Holders Program	Bronze Vase - Round	\$ 565.00
	Bronze Vase - Rectangular	\$ 630.00
	Aluminum Vase (<i>plain - not inscribed</i>)	\$ 60.00
	Replacement - Aluminum (<i>insert only</i>)	\$ 45.00
	Replacement - Bronze (<i>insert only</i>)	\$ 285.00
CANDLE MEMORIAL PROGRAM	RED Candle – One (1) year	\$ 100.00
	RED Candle – Two (2) years	\$ 200.00
	WHITE Candle – Two (2) years only <i>(HRC II & III & HS-OLR)</i>	\$ 225.00
KIOSK MEMORIAL PROGRAM	10 year Memorial starting at	\$ 310.00
STAINLESS STEEL PORTRAITS	Application Fee	\$ 55.00
	One Person Portrait (or)	\$ 260.00
	Two Person Portrait	\$ 445.00
	Cover (if required for flush marker site)	\$ 105.00
WEATHER PERMITTING SERVICES		
Shrub Maintenance Program	Trimming per bush	\$ 45.00
	Removal per bush	\$ 45.00
Monument Cleaning Service	Single Lot	\$ 100.00
	Double Lot	\$ 125.00
	Larger Lots	\$ 180.00 +
MEMORIAL PROGRAMS	<i>Various Programs</i>	<i>Inquire at office</i>

Prices are subject to change without notice. Make checks payable to **CATHOLIC CEMETERIES**.
Master Card, Visa, Discover and Bank Debit Cards accepted for all in-office transactions.

Visiting Hours 8:00 AM – 5:00 PM

Office Hours 9:00 AM – 4:30 PM

Buildings & Chapel Hours 8:00 AM – 4:30 PM

Catholic Cemeteries - Effective September 1, 2011

P O Box 182 , Westbury NY 11590-0182 516.334.7990 www.holyroodcemetery.org Diocese of Rockville Centre
Cemetery of the Holy Rood * Queen of All Saints Cemetery * Holy Sepulchre Cemetery

\$220 Urn - Metal Artisan Leaf (A) 6 1/2" diameter x 8" - 200 cubic inches (Blue 710435)
\$220 Urn - Metal Artisan Leaf (A) 6 1/2" diameter x 8" - 200 cubic inches (Red 710436)
\$220 Urn - Metal Artisan Leaf (A) 6 1/2" diameter x 8" - 200 cubic inches (Copper 710433)
\$505 Urn - Cast Bronze Patrician(B) 5 1/2" x 7" x 6 1/4" - Cast Bronze Patrician (700243) 214 cubic inches
\$505 Urn - Cast Bronze Harmonia (C) 5 1/2" x 7" x 6 1/4" - #700012 - Cast Bronze Harmonia 214 cubic inches
\$505 Urn - Cast Bronze Patriot (D) 5 1/2" x 7" x 6 1/4" - Cast Bronze Patriot (700107) 214 cubic inches
\$885 Urn - Cast Bronze Regal (E) 6" x 7 3/4" x 6 3/8" - 710148 - Regal 210 CUBIC INCHES
\$600 Urn - Cast Bronze - Rose (F) 5" x 8" x 6" -ROSE (710164) 205 CUBIC INCHES
\$600 Urn - Cast Bronze Eternity (G) 5" x 8" x 6" - Eternity (710163) 205 CUBIC INCHES
\$760 Urn - Cast Bronze Serenity (H) 5" x 8" x 6" (700100) Serenity - 200 cubic inches
\$285 Urn - Fidelity (I) 5" x 9 1/2" x 5" - Fidelity - (700260) Fabricated Bronze 208 cubic inches
\$540 Urn - Brass - Enamel (J) 10" x 8 1/4" - Brass/Enamel Atlantis (710402)
\$540 Urn - Brass - Enamel (K) 10" x 8 1/4" - Brass/Enamel (710403 - Harvest)
\$540 Urn - Brass - Enamel (L) 10" x 8 1/4" - Brass/Enamel (710404 - Mystic)
\$540 Urn - Brass - Enamel (M) 10" x 8 1/4" - Brass/Enamel (710405 - Pristine)
\$220 Urn - Cultured Marble (N) 7" x 10 3/4" Cultured Marble - (Sand 704002)
\$220 Urn - Cultured Marble (N) 7" x 10 3/4" Cultured Marble - Rose 704003
\$220 Urn - Cultured Marble (N) 7" x 10 3/4" Cultured Marble - Grecian Ebony (704001)
\$220 Urn - Cultured Marble (N) 7" x 10 3/4" Cultured Marble - White 704005
\$220 Urn - Cultured Marble (N) 7" x 10 3/4" Cultured Marble -Emerald 704006
\$640 Urn - Cast Bronze - Star (O) 7" x 9" x 4" Star 710154
\$480 Urn - Oak - Cratsman Rose (P) 9" x 7 1/4" x 7" - Craftsman Rose 710406 205 cubic inches
\$405 Urn - Mahogany (Q) 7" x 8 1/2" x 7" Cross-710415
\$405 Urn - Mahogany (R) 7" x 8 1/2" x 7" Mountain Scene -710412
\$405 Urn - Mahogany (S) 7" x 8 1/2" x 7" Rose-710714
\$405 Urn - Mahogany (T) 7" x 8 1/2" x 7" Praying Hands-710415
\$405 Urn - Mahogany (U) 7" x 8 1/2" x 7" Lighthouse-710411
\$410 Urn - Rectangular 4" x 8" 8 1/2" - Antique Gold - Rectangluar Urn (UMDI)
\$410 Urn - Quad Rectangular (UMDI) 4" x 8" x 8 1/2" UMD1 - Antique Gold
\$100 Urn - Quad Emblems (UMDI) Military, Civil Service & Organizations, G047 (Rose) G0411 (Wheat/Rose) G0427 (Holy Spirit)

Catholic Cemeteries sells urns for the use of inurnment of cremated remains within our cemeteries only.
 Urns A to I and UMDI are for Select & Classic Glass Niche spaces.
 Urns J to U and UMDI are for Classic Glass Niche or Single Urn - Select Niche

Count :

31

Prices Subject to Change without notice

Master Card, Visa, Bank Debit Cards for all in office transactions

8/10/2011

Make all checks payable to CATHOLIC CEMETERIES

Page 1 of 1

Catholic Cemeteries

Diocese of Rockville Centre

P. O. Box 182 - Westbury NY 11590-0182

516-334-7990 • www.holyroodcemetery.org

Cemetery of the Holy Rood

111 Old Country Road • Westbury NY 11590

516-334-7990

Effective September 1, 2011

INTERMENT FEES	Monday to Friday	Saturday
Adults	\$ 1,470.00	\$ 1,790.00
Children – Box Over 4'6"	\$ 1,470.00	\$ 1,790.00
Children – Box 3'1" up to 4'6"	\$ 800.00	\$ 1,145.00
Children – Box up to 3'	\$ 230.00	\$ 415.00
Entombment – Private Mausoleum	\$ 1,330.00	\$ 1,640.00
Entombment – Chapel & Garden Mausoleum	\$ 1,330.00	\$ 1,640.00
Mausoleum Inscription Fee	\$ 440.00	\$ 440.00

DISINTERMENT FEES	Monday to Friday	Saturday
Adults	\$ 1,925.00	not scheduled
Children – Box Over 4'6"	\$ 1,925.00	not scheduled
Children – Box 3'1" up to 4'6"	\$ 1,235.00	not scheduled
Children – Box up to 3'	\$ 960.00	not scheduled

CREMATED REMAINS	Monday to Friday	Saturday
In a Plot	\$ 580.00	\$ 720.00
In a Niche / Crypt	\$ 485.00	\$ 590.00

ACCESSORIES	Monday to Friday	Saturday
Tent with Chairs	\$ 215.00	\$ 215.00

OVERTIME CHARGES	Monday to Friday After 2:30 PM	Saturday After 12:00 noon
Charge per half hour	\$ 270.00	\$ 270.00

Cancellation of a committal service order shall be subject to a charge of 50% of the stated fee.

All committal services are subject to the specification of the General Rules and Regulations of Catholic Cemeteries. For details on the rights of interment, criteria/eligibility for burial in a Catholic Cemetery, and our administrative procedures and protocols, please review the rules at www.holyroodcemetery.org

Prices are subject to change without notice. Make checks payable to **CATHOLIC CEMETERIES**.

Master Card, Visa, Discover and Bank Debit Cards accepted for all in-office transactions.

Everyone is encouraged to review the cemetery rules and regulations concerning plants and decorations before purchase.

Note: Verify crypt/niche dimensions prior to purchase of casket/urn. Inscriptions are regulated in format and limited in length. Entombment, inurnment, and inscription fees are published separately. There is no additional charge for maintenance.

Visiting Hours 8:00 AM – 5:00 PM

Office Hours 9:00 AM – 4:30 PM

Buildings & Chapel Hours 8:00 AM – 4:30 PM

Catholic Cemeteries

Diocese of Rockville Centre
P. O. Box 182 - Westbury NY 11590-0182
516-334-7990 • www.holyroodcemetery.org

Cemetery of the Holy Rood 111 Old Country Road • Westbury NY 11590 516-334-7990

EFFECTIVE SEPTEMBER 1, 2011

PLOT PRICES

Single Grave	\$ 2,950.00
Double Grave	\$ 5,900.00
Triple Grave	\$ 9,100.00
Four Grave	\$ 12,450.00
Six Grave	\$ 18,680.00
Eight Grave	\$ 24,900.00
Twelve Grave	\$ 37,350.00
Eighteen Grave	\$ 65,000.00

Children's Section

Grave	\$ 290.00
Interment * (Saturday \$415.00)	* \$ 230.00
Marker	\$ 640.00
Setting Fee	\$ 100.00

Mausoleum Sites

Single	\$ 65,000.00
Double	\$ 130,000.00

At the present time Holy Rood Cemetery has only a few of the inventory choices of graves for sale. In the event lot owners surrender graves (as in cases of moving out of state) these graves are presented for sale with the next request to the cemetery office. There is no "waiting list" of interested purchasers for lots. Lots are made available to the next inquiry when they are available for sale.

We are hopeful that we will soon have lots available for sale at a new cemetery located near Holy Rood. At this time those plans remain in the planning and local approval processes.

We do offer a selection of crypt and cremation niches for sale (available on a different price list).

Prices are subject to change without notice. Make checks payable to **CATHOLIC CEMETERIES**.
Master Card, Visa, Discover and Bank Debit Cards accepted for all in-office transactions.

*Everyone is encouraged to review the cemetery rules and regulations concerning plants and decorations before purchase.
Inscriptions are regulated in format and limited in length. Entombment, inurnment, and inscription fees are published separately.*

Visiting Hours 8:00 AM – 5:00 PM

Office Hours 9:00 AM – 4:30 PM

Buildings & Chapel Hours 8:00 AM – 4:30 PM



Catholic Cemeteries - September 1, 2011

P O Box 182 , Westbury NY 11590-0182
516.334.7990 www.holyroodcemetery.org
Diocese of Rockville Centre



Cemetery of the Holy Rood * Queen of All Saints Cemetery * Holy Sepulchre Cemetery

Catholic Cemeteries



~~\$220~~

~~Urn - Metal Artisan Leaf (A)~~

~~6 1/2" diameter x 8" - 200 cubic inches (Green 710434 NO LONGER AVAILABLE AS S~~



\$220

Urn - Metal Artisan Leaf (A)

6 1/2" diameter x 8" - 200 cubic inches (Red 710436)



\$220

Urn - Metal Artisan Leaf (A)

6 1/2" diameter x 8" - 200 cubic inches (Blue 710435)



\$220

Urn - Metal Artisan Leaf (A)

6 1/2" diameter x 8" - 200 cubic inches (Copper 710433)



\$505

Urn - Cast Bronze Patrician(B)

5 1/2" x 7" x 6 1/4" - Cast Bronze Patrician (700243) 214 cubic inches



\$505

Urn - Cast Bronze Harmonia (C)

5 1/2" x 7" x 6 1/4" - #700012 - Cast Bronze Harmonia 214 cubic inches



\$505

Urn - Cast Bronze Patriot (D)

5 1/2" x 7" x 6 1/4" - Cast Bronze Patriot (700107) 214 cubic inches



\$885

Urn - Cast Bronze Regal (E)

6" x 7 3/4" x 6 3/8" - 710148 - Regal 210 CUBIC INCHES



\$600

Urn - Cast Bronze - Rose (F)

5" x 8" x 6" -ROSE (710164) 205 CUBIC INCHES

Count :

9

Prices Subject to Change without notice

Master Card, Visa, Bank Debit Cards for all in office transactions



Catholic Cemeteries - September 1, 2011

P O Box 182 , Westbury NY 11590-0182
516.334.7990 www.holyroodcemetery.org
Diocese of Rockville Centre



Cemetery of the Holy Rood * Queen of All Saints Cemetery * Holy Sepulchre Cemetery

Catholic Cemeteries



\$600 Urn - Cast Bronze Eternity (G) 5" x 8" x 6" - Eternity (710163) 205 CUBIC INCHES



\$760 Urn - Cast Bronze Serenity (H) 5" x 8" x 6" (700100) Serenity - 200 cubic inches



\$285 Urn - Fidelity (I) 5" x 9 1/2" x 5" - Fidelity - (700260) Fabricated Bronze 208 cubic inches

\$540 Urn - Brass - Enamel (J) 10" x 8 1/4" - Brass/Enamel Atlantis (710402)

\$540 Urn - Brass - Enamel (K) 10" x 8 1/4" - Brass/Enamel (710403 - Harvest)

\$540 Urn - Brass - Enamel (L) 10" x 8 1/4" - Brass/Enamel (710404 - Mystic)

\$540 Urn - Brass - Enamel (M) 10" x 8 1/4" - Brass/Enamel (710405 - Pristine)



\$220 Urn - Cultured Marble (N) 7" x 10 3/4" Cultured Marble - (Sand 704002)



\$220 Urn - Cultured Marble (N) 7" x 10 3/4" Cultured Marble - Grecian Ebony (704001)

Count : 18 *Prices Subject to Change without notice*
Master Card, Visa, Bank Debit Cards for all in office transactions



Catholic Cemeteries - September 1, 2011

P O Box 182 , Westbury NY 11590-0182
516.334.7990 www.holyroodcemetery.org
Diocese of Rockville Centre



*Cemetery of the Holy Rood * Queen of All Saints Cemetery * Holy Sepulchre Cemetery*

Catholic Cemeteries



\$220 Urn - Cultured Marble (N) 7" x 10 3/4" Cultured Marble - Rose 704003



\$220 Urn - Cultured Marble (N) 7" x 10 3/4" Cultured Marble - White 704005



\$220 Urn - Cultured Marble (N) 7" x 10 3/4" Cultured Marble -Emerald 704006



\$640 Urn - Cast Bronze - Star (O) 7" x 9" x 4" Star 710154

\$480 Urn - Oak - Cratsman Rose (P) 9" x 7 1/4" x 7" - Craftsman Rose 710406 205 cubic inches

\$405 Urn - Mahogany (Q) 7" x 8 1/2" x 7" Cross-710415

\$405 Urn - Mahogany (R) 7" x 8 1/2" x 7" Mountain Scene -710412

\$405 Urn - Mahogany (S) 7" x 8 1/2" x 7" Rose-710714

\$405 Urn - Mahogany (T) 7" x 8 1/2" x 7" Praying Hands-710415

Count : 27 *Prices Subject to Change without notice*
Master Card, Visa, Bank Debit Cards for all in office transactions



Catholic Cemeteries - September 1, 2011

P O Box 182 , Westbury NY 11590-0182
516.334.7990 www.holyroodcemetery.org
Diocese of Rockville Centre



Cemetery of the Holy Rood * Queen of All Saints Cemetery * Holy Sepulchre Cemetery

Catholic Cemeteries

\$405 Urn - Mahogany (U) 7" x 8 1/2" x 7" Lighthouse-710411

\$410 Urn - Rectangular 4" x 8" x 8 1/2" - Antique Gold - Rectangluar Urn (UMDI)



\$410 Urn - Quad Rectangular (UMDI) 4" x 8" x 8 1/2" UMDI - Antique Gold



\$100 Urn - Quad Emblems (UMDI) Military, Civil Service & Organizations,G047(Rose)G0411 (Wheat/Rose)G0427 (Holy Sp



\$550 Urn - Marble - Brown 7 1/16 " x 4 1/4 " x 8 3/4 "



\$550 Urn - Onyx - Green 7 1/16 " x 4 1/4 " x 8 3/4 "

Count :

33

Prices Subject to Change without notice

Master Card, Visa, Bank Debit Cards for all in office transactions

Catholic Cemeteries

Emblem Selection

Diocese of Rockville Centre



08/24/2011

Some features may require proof of membership to organization

Placement Permitted S = Single or True Companion, SS = Side by Side Companion, N = Cremation Niche

Catholic Cemeteries

Features - Emblems for Single & True Companion Crypts



Crucifix

\$140.00

S

Item # : 3

1806B

SS

Y

Top Center

Height (inches) 6



Jesus

\$155.00

S

Item # : 3

2556C

Top Corners (L)/Bottom Center **N**

Height (inches) 4



Jesus

\$190.00

S

Item # : 3

2830B

SS

Top Corners (L)

Height (inches) 5



Mary

\$155.00

S

Item # : 3

2558C

Top Corners (R)/Bottom Center **N**

Height (inches) 4

Catholic Cemeteries

Features - Emblems for Single & True Companion Crypts



Saint Anthony/Child

\$445.00

S

Item # : 3

4264B

SS

Top Corners (L)

Height (inches) 8



Our Lady of Czestochowa

\$530.00

S

Item # : 3

4296B

SS

Top Corners

Height (inches) 8



Saint Francis

\$445.00

S

Item # : 3

4269B

SS

Top Corners

Height (inches) 8



Saint Patrick

\$530.00

S

Item # : 3

4186B

SS

Top Corners

Height (inches) 9

Catholic Cemeteries

Features - Emblems for Single & True Companion Crypts



Saint Joseph/Child

\$530.00

S

Item # : 3 **4189B**

SS

Top Corners

Height (inches) 9



Saint Peter

\$530.00

S

Item # : 3 **4278B**

SS

Top Corners

Height (inches) 9



Saint Anthony/Child

\$530.00

S

Item # : 3 **4277B**

SS

Top Corners (L)

Height (inches) 9



Saint Theresa

\$530.00

S

Item # : 3 **4279B**

SS

Top Corners

Height (inches) 9

Catholic Cemeteries

Features - Emblems for Single & True Companion Crypts



Saint Francis

\$530.00

S

Item # : 3

4280B

SS

Top Corners (L)

Height (inches) 9



Our Lady of Guadalupe

\$530.00

S

Item # : 3

4282B

SS

Top Corners

Height (inches) 9



Saint John

\$530.00

S

Item # : 3

4281B

SS

Top Corners

Height (inches) 9



Saint Anne/Child

\$530.00

S

Item # : 3

4283B

SS

Top Corners (L)

Height (inches) 9

Catholic Cemeteries

Features - Emblems for Single & True Companion Crypts



Our Lady of Fatima

\$530.00

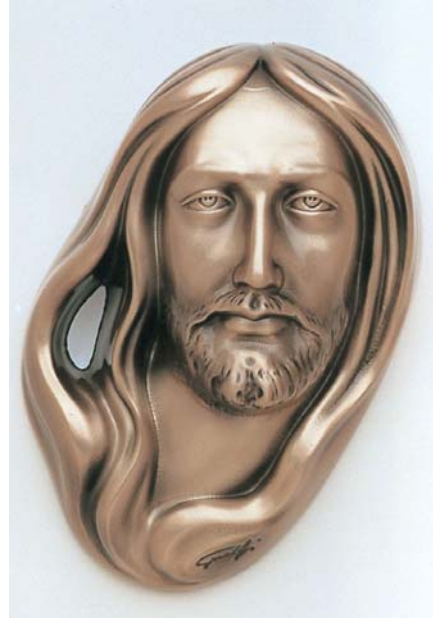
S

Item # : **3 4284B**

SS

Top Corners

Height (inches) **9**



Christ

\$155.00

S

Item # : **1 500319M**

Top Corners

Height (inches) **5**



Madonna

\$530.00

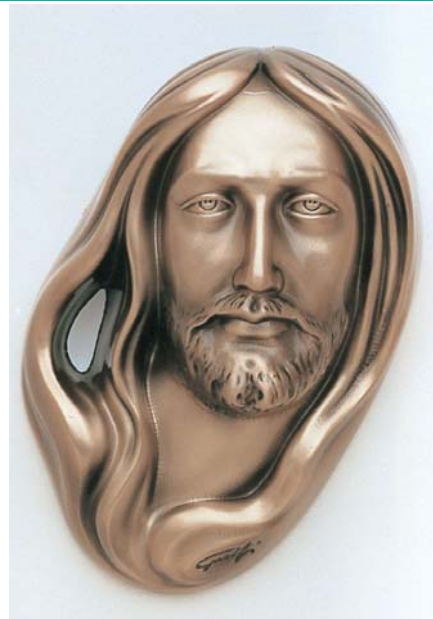
S

Item # : **3 7076B**

SS

Top Corners

Height (inches) **8**



Christ

\$235.00

S

Item # : **1 500320M**

SS

Top Corners

Height (inches) **6**

Catholic Cemeteries

Features - Emblems for Single & True Companion Crypts



Madonna
\$155.00

S

Item # : 1 500321M

Top Corners

Height (inches) 5



Madonna and Christ
\$300.00

S

Item # : 1 500325M

Top Corners

Height (inches) 7

SS



Madonna
\$235.00

S

Item # : 1 500324M

Top Corners

Height (inches) 6



Angel (Kneeling Right)
\$155.00

S

Item # : 1 500326M

Top Corners (L)

Height (inches) 4

Catholic Cemeteries

Features - Emblems for Single & True Companion Crypts



Angel (Kneeling Left)

\$155.00

S

Item # : 1 500327M

Top Corners (R)

Height (inches) 4



Madonna and Child

\$155.00

S

Item # : 1 500329M

Top Corners (L)

Height (inches) 4



Pieta

\$300.00

S

Item # : 1 500328M

Top Corners

Height (inches) 5



Sacred Heart

\$155.00

S

Item # : 1 500340M

Top Corners

Height (inches) 5

Catholic Cemeteries

Features - Emblems for Single & True Companion Crypts



Infant of Prague

\$500.00

S

Item # : 1

2515

SS

Top Corners

Height (inches) 10



Madonna/Child

\$335.00

S

Item # : 3

1820B

SS

Top Corners (R)

Height (inches) 8



Madonna

\$190.00

S

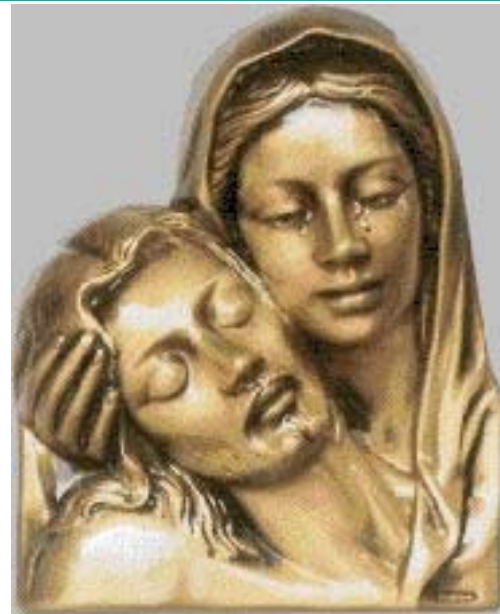
Item # : 3

2412B

SS

Top Corners (L)

Height (inches) 6



Small Pieta

\$355.00

S

Item # : 3

2680B

SS

Top Corners

Height (inches) 6

Catholic Cemeteries

Features - Emblems for Single & True Companion Crypts



Saint Jude

\$530.00

S

Item # : 3

4187B

SS

Top Corners

Height (inches) 9



Madonna and Christ Child

\$245.00

S

Item # : 1

500317M

SS

Top Corners (L)

Height (inches) 5



Saint Michael

\$530.00

S

Item # : 3

4285B

SS

Top Corners

Height (inches) 10



Madonna

\$235.00

S

Item # : 1

500322M

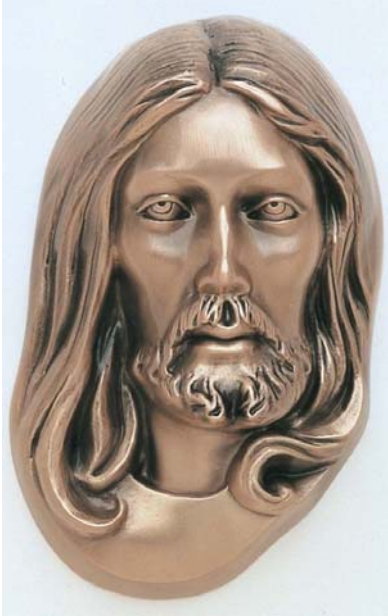
SS

Top Corners

Height (inches) 6

Catholic Cemeteries

Features - Emblems for Single & True Companion Crypts



Christ

\$235.00

S

Item # : 1 500323M

SS

Top Corners

Height (inches) 6



Beloved Brother

\$155.00

S

Item # : 3 0105B

SS

Above First Name/Below Dates

Height (inches) 2



Christ/Crown of Thorns

\$190.00

S

Item # : 1 500331M

SS

Top Corners

Height (inches) 5



Beloved Sister

\$155.00

S

Item # : 3 0106B

SS

Above First Name/Below Dates

Height (inches) 2

Catholic Cemeteries

Features - Emblems for Single & True Companion Crypts



Beloved Son

\$155.00

S

Item # : 3 1103B

SS

Above First Name/Below Dates

Height (inches) 2

Beloved Father

\$155.00

S

Item # : 3 1107B

SS

Above First Name/Below Dates

Height (inches) 2



Beloved Daughter

\$155.00

S

Item # : 3 1104B

SS

Above First Name/Below Dates

Height (inches) 2

Beloved Mother

\$155.00

S

Item # : 3 1108B

SS

Above First Name/Below Dates

Height (inches) 2

Catholic Cemeteries

Features - Emblems for Single & True Companion Crypts



Beloved Husband

\$155.00

S

Item # : 3

1109B

SS

Above First Name/Below Dates

Height (inches) 2

Rose

\$100.00

S

Item # : 3

2583B

SS

Y

Between Dates

N

Height (inches) 4



Beloved Wife

\$155.00

S

Item # : 3

0117B

SS

Above First Name/Below Dates

Height (inches) 2

U.S. Coast Guard

\$140.00

S

Item # : 3

4170B

SS

Y

Between Dates

N

Height (inches) 3

Catholic Cemeteries

Features - Emblems for Single & True Companion Crypts



U.S. Navy

\$140.00

S

Item # : **3**

4171B

SS

Y

Between Dates

N

Height (inches) **3**

U.S. Marines

\$140.00

S

Item # : **3**

4173B

SS

Y

Between Dates

N

Height (inches) **3**



U.S. Army

\$140.00

S

Item # : **3**

4172B

SS

Y

Between Dates

N

Height (inches) **3**

U.S. Air Force

\$140.00

S

Item # : **3**

4174B

SS

Y

Between Dates

N

Height (inches) **3**

Catholic Cemeteries

Features - Emblems for Single & True Companion Crypts



Fire Department

\$140.00

S

Item # : **3 4494B**

SS

Y Between Dates

N

Height (inches) **3**

IFOP (Police Star) Shield

\$140.00

S

Item # : **1 M104642**

SS

Y Between Dates

N

Height (inches) **3**



Generic Police Badge

\$140.00

S

Item # : **3 0039B**

SS

Y Between Dates

N

Height (inches) **3**

Pope John Paul II

\$355.00

S

Item # : **3 1529P**

Top Corners

Height (inches) **4**

No Longer Available

MARY

\$155.00

S

Item # : **3 2557C**

Top Corner

Height (inches) 4



Padre Pio

\$235.00

S

Item # : **4 7289B**

SS

Top Corners (R)

Height (inches) 5

Catholic Cemeteries

Features - Emblems for Side-by-Side Crypts



Crucifix

\$140.00

S

Item # : **3 1806B**

SS

Y

Top Center

Height (inches) **6**



Saint Anthony/Child

\$445.00

S

Item # : **3 4264B**

SS

Top Corners (L)

Height (inches) **8**



Jesus

\$190.00

S

Item # : **3 2830B**

SS

Top Corners (L)

Height (inches) **5**



Saint Francis

\$445.00

S

Item # : **3 4269B**

SS

Top Corners

Height (inches) **8**

Catholic Cemeteries

Features - Emblems for Side-by-Side Crypts



Our Lady of Czestochowa

\$530.00

S

Item # : **3 4296B**

SS

Top Corners

Height (inches) **8**



Saint Joseph/Child

\$530.00

S

Item # : **3 4189B**

SS

Top Corners

Height (inches) **9**



Saint Patrick

\$530.00

S

Item # : **3 4186B**

SS

Top Corners

Height (inches) **9**



Saint Anthony/Child

\$530.00

S

Item # : **3 4277B**

SS

Top Corners (L)

Height (inches) **9**

Catholic Cemeteries

Features - Emblems for Side-by-Side Crypts



Saint Peter

\$530.00

S

Item # : **3 4278B**

SS

Top Corners

Height (inches) **9**



Saint Francis

\$530.00

S

Item # : **3 4280B**

SS

Top Corners (L)

Height (inches) **9**



Saint Theresa

\$530.00

S

Item # : **3 4279B**

SS

Top Corners

Height (inches) **9**



Saint John

\$530.00

S

Item # : **3 4281B**

SS

Top Corners

Height (inches) **9**

Catholic Cemeteries

Features - Emblems for Side-by-Side Crypts



Our Lady of Guadalupe

\$530.00

S

Item # : **3 4282B**

SS

Top Corners

Height (inches) **9**



Our Lady of Fatima

\$530.00

S

Item # : **3 4284B**

SS

Top Corners

Height (inches) **9**



Saint Anne/Child

\$530.00

S

Item # : **3 4283B**

SS

Top Corners (L)

Height (inches) **9**



Madonna

\$530.00

S

Item # : **3 7076B**

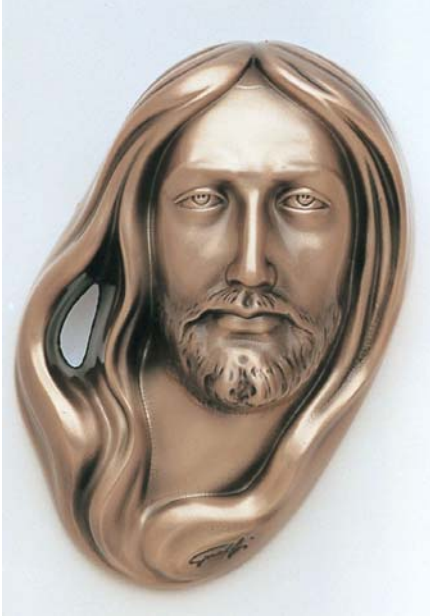
SS

Top Corners

Height (inches) **8**

Catholic Cemeteries

Features - Emblems for Side-by-Side Crypts



Christ

\$235.00

S

Item # : 1 **500320M**

SS

Top Corners

Height (inches) 6



Madonna and Christ

\$300.00

S

Item # : 1 **500325M**

SS

Top Corners

Height (inches) 7



Madonna

\$235.00

S

Item # : 1 **500324M**

SS

Top Corners

Height (inches) 6



Pieta

\$300.00

S

Item # : 1 **500328M**

SS

Top Corners

Height (inches) 5

Catholic Cemeteries

Features - Emblems for Side-by-Side Crypts



Infant of Prague
2515

Infant of Prague

\$500.00

S

Item # : 1

2515

SS

Top Corners

Height (inches) 10



Madonna/Child

\$335.00

S

Item # : 3

1820B

SS

Top Corners (R)

Height (inches) 8



Madonna

\$190.00

S

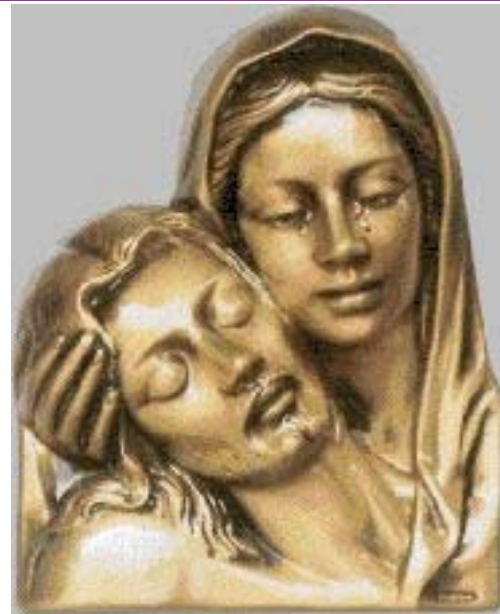
Item # : 3

2412B

SS

Top Corners (L)

Height (inches) 6



Small Pieta

\$355.00

S

Item # : 3

2680B

SS

Top Corners

Height (inches) 6

Catholic Cemeteries

Features - Emblems for Side-by-Side Crypts



Madonna/Child

\$500.00

Item # : 3 1818B

SS

Top Corners (L)

Height (inches) 10



Saint Jude

\$530.00

Item # : 3 4187B

**S
SS**

Top Corners

Height (inches) 9



Madonna/Child

\$500.00

Item # : 3 1212B

SS

Top Corners

Height (inches) 10



Saint Joseph/Child

\$530.00

Item # : 3 4265B

SS

Top Corners

Height (inches) 9

Catholic Cemeteries

Features - Emblems for Side-by-Side Crypts



Saint Michael
\$530.00

S
SS

Item # : 3 **4285B**
Top Corners
Height (inches) 10



Pieta
\$1,020.00

SS

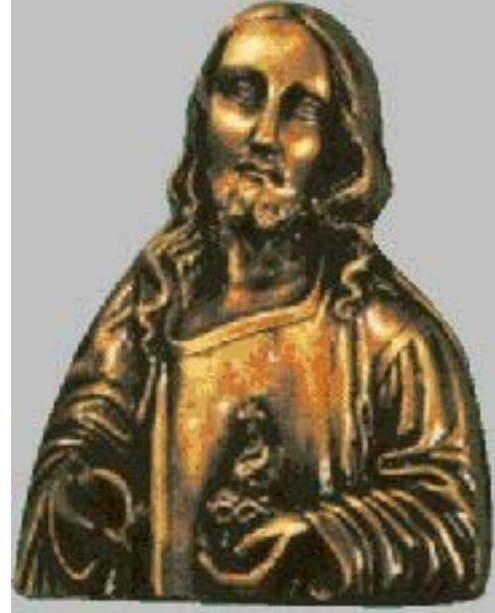
Item # : 3 **1512B**
Bottom Center
Height (inches) 14



Sacred Heart
\$580.00

SS

Item # : 3 **4286B**
Top Corners
Height (inches) 11



Christ
\$890.00

SS

Item # : 3 **1867B**
Bottom Center
Height (inches) 12

Catholic Cemeteries

Features - Emblems for Side-by-Side Crypts



Madonna
\$890.00

Item # : **3 3101B** **SS**
Y Bottom Center
Height (inches) 12



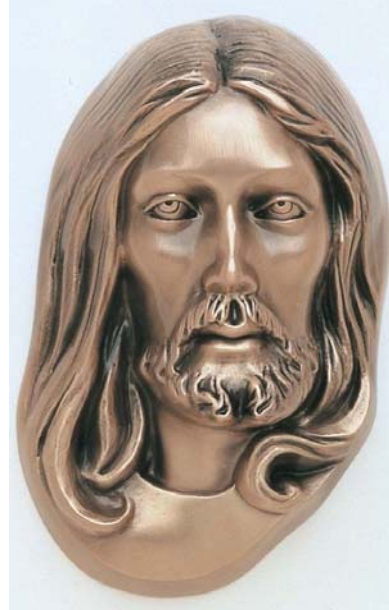
Madonna
\$235.00

Item # : **1 500322M** **S**
SS
Top Corners
Height (inches) 6



Madonna and Christ Child
\$245.00

Item # : **1 500317M** **S**
SS
Top Corners (L)
Height (inches) 5

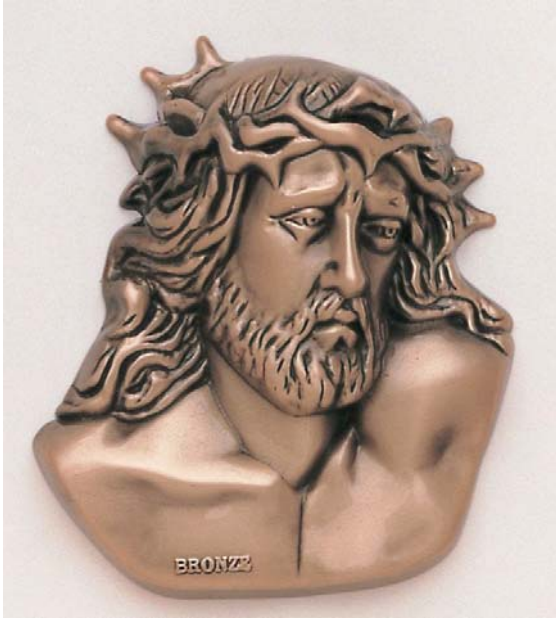


Christ
\$235.00

Item # : **1 500323M** **S**
SS
Top Corners
Height (inches) 6

Catholic Cemeteries

Features - Emblems for Side-by-Side Crypts



Christ/Crown of Thorns

\$190.00

S

Item # : 1 500331M

SS

Top Corners

Height (inches) 5



Beloved Sister

\$155.00

S

Item # : 3 0106B

SS

Above First Name/Below Dates

Height (inches) 2



Beloved Brother

\$155.00

S

Item # : 3 0105B

SS

Above First Name/Below Dates

Height (inches) 2

Beloved Son

\$155.00

S

Item # : 3 1103B

SS

Above First Name/Below Dates

Height (inches) 2

Catholic Cemeteries

Features - Emblems for Side-by-Side Crypts



Beloved Daughter

\$155.00

S

Item # : **3 1104B**

SS

Above First Name/Below Dates

Height (inches) 2

Beloved Mother

\$155.00

S

Item # : **3 1108B**

SS

Above First Name/Below Dates

Height (inches) 2



Beloved Father

\$155.00

S

Item # : **3 1107B**

SS

Above First Name/Below Dates

Height (inches) 2

Beloved Husband

\$155.00

S

Item # : **3 1109B**

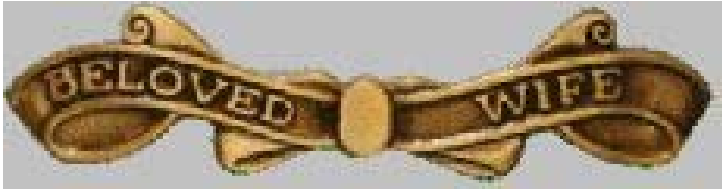
SS

Above First Name/Below Dates

Height (inches) 2

Catholic Cemeteries

Features - Emblems for Side-by-Side Crypts



Beloved Wife

\$155.00

S

Item # : **3 0117B**

SS

Above First Name/Below Dates

Height (inches) **2**

U.S. Coast Guard

\$140.00

S

Item # : **3 4170B**

SS

Y

Between Dates

N

Height (inches) **3**



Rose

\$100.00

S

Item # : **3 2583B**

SS

Y

Between Dates

N

Height (inches) **4**

U.S. Navy

\$140.00

S

Item # : **3 4171B**

SS

Y

Between Dates

N

Height (inches) **3**

Catholic Cemeteries

Features - Emblems for Side-by-Side Crypts



U.S. Army

\$140.00

S

Item # : **3 4172B**

SS

Y

Between Dates

N

Height (inches) **3**



U.S. Air Force

\$140.00

S

Item # : **3 4174B**

SS

Y

Between Dates

N

Height (inches) **3**



U.S. Marines

\$140.00

S

Item # : **3 4173B**

SS

Y

Between Dates

N

Height (inches) **3**



Fire Department

\$140.00

S

Item # : **3 4494B**

SS

Y

Between Dates

N

Height (inches) **3**

Catholic Cemeteries

Features - Emblems for Side-by-Side Crypts



Generic Police Badge

\$140.00

S

Item # : **3 0039B**

SS

Y

Between Dates

N

Height (inches) **3**

Padre Pio

\$445.00

Item # : **3 1480P**

SS

Top Corners

Height (inches) **8**



IFOP (Police Star) Shield

\$140.00

S

Item # : **1 M104642**

SS

Y

Between Dates

N

Height (inches) **3**

Padre Pio

\$235.00

S

Item # : **4 7289B**

SS

Top Corners (R)

Height (inches) **5**

Catholic Cemeteries

Features - Emblems for Side-by-Side Crypts



Angel (Kneeling Right and Left)

\$310.00

Item # : 1 5003267M

SS

Top Corners (L and R)

Height (inches) 4

Catholic Cemeteries

Features and Emblems for Cremation Niches



Jesus

\$155.00

S

Item # : 3

2556C

Top Corners (L)/Bottom Center **N**

Height (inches) 4

Rose

\$100.00

S

Item # : 3

2583B

SS

Y

Between Dates

N

Height (inches) 4



Mary

\$155.00

S

Item # : 3

2558C

Top Corners (R)/Bottom Center **N**

Height (inches) 4

U.S. Coast Guard

\$140.00

S

Item # : 3

4170B

SS

Y

Between Dates

N

Height (inches) 3

Catholic Cemeteries

Features and Emblems for Cremation Niches



U.S. Navy

\$140.00

S

Item # : **3**

4171B

SS

Y

Between Dates

N

Height (inches) **3**

U.S. Marines

\$140.00

S

Item # : **3**

4173B

SS

Y

Between Dates

N

Height (inches) **3**



U.S. Army

\$140.00

S

Item # : **3**

4172B

SS

Y

Between Dates

N

Height (inches) **3**

U.S. Air Force

\$140.00

S

Item # : **3**

4174B

SS

Y

Between Dates

N

Height (inches) **3**

Catholic Cemeteries

Features and Emblems for Cremation Niches



Fire Department

\$140.00

S

Item # : 3

4494B

SS

Y

Between Dates

N

Height (inches) 3

IFOP (Police Star) Shield

\$140.00

S

Item # : 1

M104642

SS

Y

Between Dates

N

Height (inches) 3



Generic Police Badge

\$140.00

S

Item # : 3

0039B

SS

Y

Between Dates

N

Height (inches) 3

Crucifix

\$75.00

S

Item # : 3

4214B

Y

Top Center

N

Height (inches) 3

Catholic Cemeteries

Features and Emblems for Cremation Niches



Holy Family

\$150.00

Item # : 3

1472B

Y

Bottom Center

N

Height (inches) 4



Angel (left facing)

\$155.00

Item # : 3

0016L

Top Corner (L)

N

Height (inches) 3



Mary

\$105.00

Item # : 3

2347B

Top Corners/Bottom Center **N**

Height (inches) 3



Angel (right facing)

\$155.00

Item # : 3

0016R

Top Corner (R)

N

Height (inches) 3